



Healthy  
Communities  
Foundation

HCF  
Strategic  
Plan

## MISSION

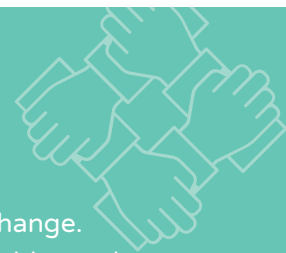
We are a community-informed grant making foundation that seeks to measurably improve the health and well-being of individuals, families, and communities in our service area by promoting health equity, quality, and access.

## STRATEGIC VISION

That all residents of our communities lead full, healthy, and happy lives and enjoy equal life expectancy.

## CORE VALUES

- Energizing the spirit and potential of our local community.
- Supporting efforts to provide tools that build healthier lives.
- Pursuing our work with a health equity frame.
- Addressing the immediate needs while investing in long-term systems change.
- Valuing experiential and evidence-based practices that produce measurable results.
- Bringing stakeholders together to share wisdom and cultivate trust, collaboration, and coordination.
- Maintaining the highest legal and ethical standards in the stewardship of foundation resources.



## COMMITMENT TO RACIAL & ETHNIC EQUITY

HCF understands that systemic conditions such as implicit bias and institutional/structural racism impede access and opportunities that improve well-being and a sustainable quality of life. We intend to use our platform and resources to create change, forge partnerships, and share learning through a focused and visible commitment to address these disparities and achieve health equity.

## STRATEGIC PRIORITIES

HCF will:

- As part of our grantmaking framework, fund efforts that: provide access to quality health care; address social determinants of health; advocate for policies and systems change that impact health; and augment knowledge through capacity-building, learning and other health-related initiatives
- Meaningfully engage community organizations, leaders, residents, and government entities
- Continuously learn about and be a source of information regarding its communities
- Collaborate with other foundations, learning/research institutions, and thought leaders
- Ensure excellence in leadership and organizational stewardship

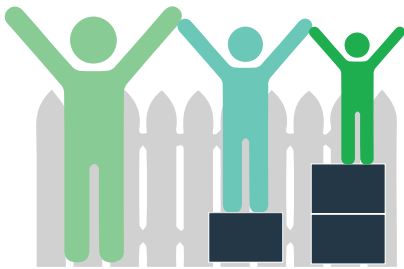
## GRANTMAKING FRAMEWORK



## RESOURCE ALLOCATION PRINCIPLES

### Legacy

Given that HCF's endowment is funded from the proceeds of the MacNeal Hospital sale to a private company in 1999, HCF makes grants in the MacNeal Hospital service area.

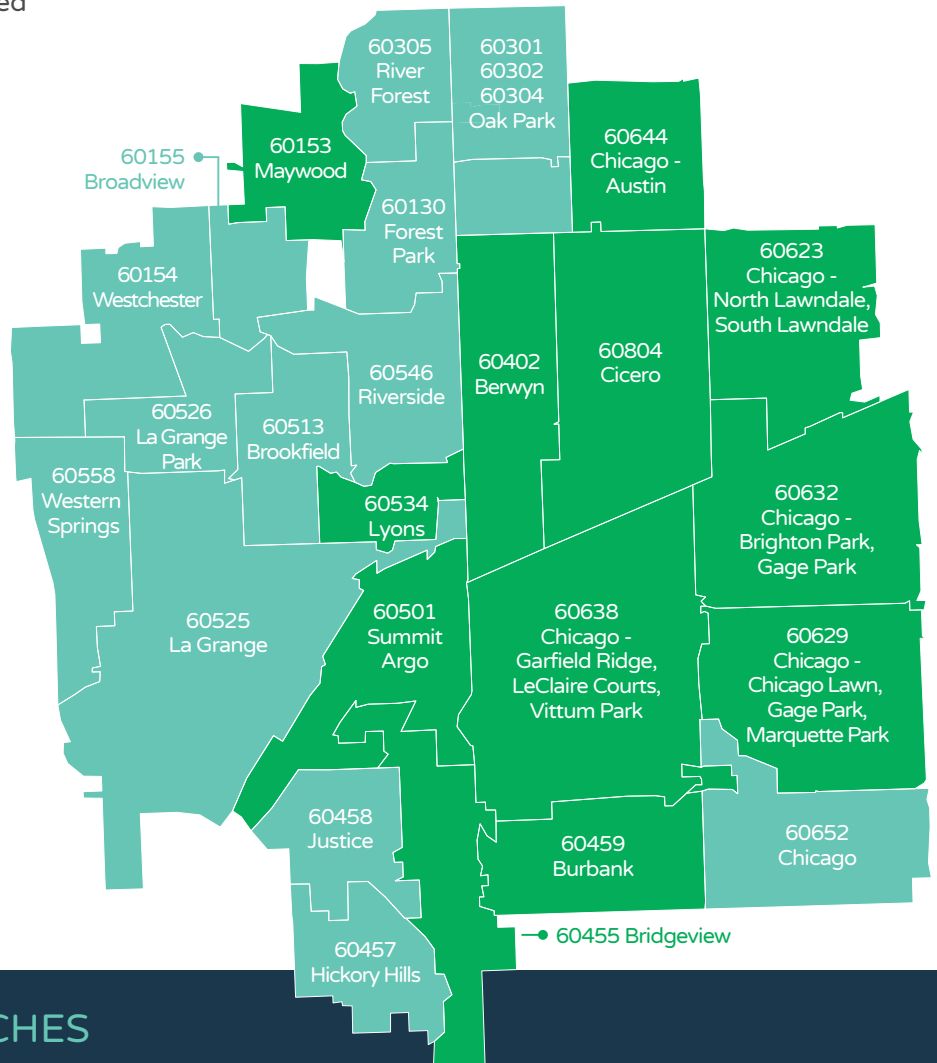


### Health Equity

To achieve health equity we invest the majority of funds in zip codes that rank the lowest in our social determinants of health study. These areas are marked as **Priority Zones** on the map.

 Priority Zones

### HCF Funding Area



## INVESTMENT APPROACHES



**General Operating Support**  
HCF will allocate the majority of its funds to

general operating support. Priority zones will receive the majority of available funds through long-term grants (of up to five years). We will issue an RFP annually for general operating support.



**Strategic Health Initiatives**  
Additionally, and by invitation, HCF

will fund strategic health initiatives that explore or expand new opportunities and/or address crises or emergencies requiring immediate, targeted resources.



**Capacity Building**  
HCF supports learning communities,

trainings, conferences and other programs aimed at strengthening the nonprofit sector and our partners who help achieve our mission within our region.

## ANTICIPATED IMPACT

Based on its grantmaking and strategic investments, HCF anticipates the following impacts: increasing access to services and care; improving quality of care; improving institutional outcomes for populations with historical barriers to quality care; creating effective multi-sector collaborations and alliances; advocating for policies and systems change that impact the health of the region; and increasing the capacity of leaders and organizations to advance health equity, quality, and access.

